

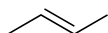
Quiz 1 (Wednesday morning)

Name:

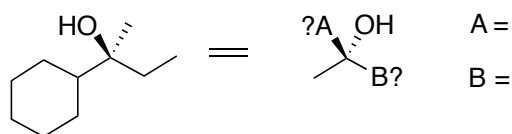
Recitation Instructor:

*The following quiz is 20 points. You have 20 minutes to complete it. Good Luck!*

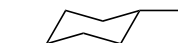
1. Provide a name for the following molecule, making sure to designate (E) or (Z) (5 points)



2. Finish redrawing the following molecule (5 points)



3. Is the following molecule chiral or achiral, and if it is achiral is it meso? (5 points)



4. Redraw the following Newman projection in standard line-angle notation, making sure to accurately reflect the configuration and any stereochemistry represented. (5 points)

